

Violoncello Double Bass

1.1 IN THE BEGINNING WAS THE

♩ = 80

1 *divisi ppp*

6 *ppp legato cresc. poco a poco* **A**

12 *f cresc. poco a poco* **B**

18

26 *mf*

1.2 GLORIA

mp

3 *mp* **E**

44

50 *mf* **F**

Violoncello Double Bass

56 G

61

65

68 2.

divisi *mf* *rit.*

♩ = 102 THE NEWBORN KING

73 I 9 J 4

115 N 4 O 11 P 8

138 Q 8 R 6 S 5

Violoncello Double Bass

2.1.2 LOOK, THE LAMB OF GOD

1 ♩ = 76

2x only

legato mp

Detailed description: This block contains the first six measures of the piece. It is written in bass clef with a key signature of one flat (B-flat) and a 4/4 time signature. The first measure has a whole rest. The second measure has a whole rest. The third measure begins a phrase with a double bar line and repeat dots, marked '2x only'. The notes are G2, F2, E2, D2, C2, B1, A1, G1. The first two notes are marked 'legato' and the rest 'mp'. The phrase ends with a repeat sign and a fermata over the final G1.

7

A

15

p

Detailed description: This block contains measures 7 through 15. Measure 7 has a whole rest. Measure 8 begins a phrase with a double bar line and repeat dots, marked 'A'. The notes are G2, F2, E2, D2, C2, B1, A1, G1. The phrase is marked 'p'. Measure 15 ends with a fermata over the final G1.

26

Detailed description: This block contains measures 26 through 32. The notes are G2, F2, E2, D2, C2, B1, A1, G1. The phrase is marked 'mp'.

33

mp

Detailed description: This block contains measures 33 through 39. The notes are G2, F2, E2, D2, C2, B1, A1, G1. The phrase is marked 'mp'.

40

C

Detailed description: This block contains measures 40 through 45. The notes are G2, F2, E2, D2, C2, B1, A1, G1. The phrase is marked 'mp'.

46

f

ff

Detailed description: This block contains measures 46 through 55. The notes are G2, F2, E2, D2, C2, B1, A1, G1. The phrase is marked 'f' and 'ff'.

2.1.4 COME FOLLOW ME

56

D

mf

Detailed description: This block contains measures 56 through 61. The notes are G2, F2, E2, D2, C2, B1, A1, G1. The phrase is marked 'mf'.

62

f

Detailed description: This block contains measures 62 through 67. The notes are G2, F2, E2, D2, C2, B1, A1, G1. The phrase is marked 'f'.

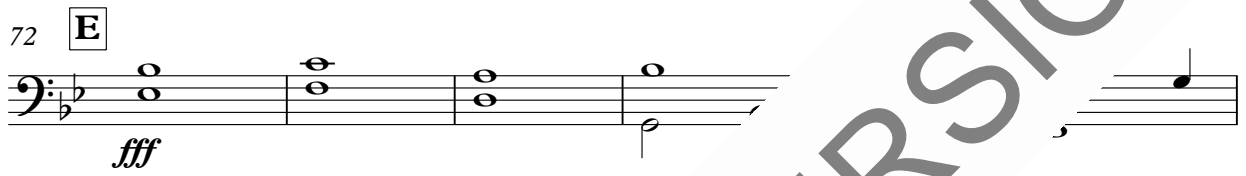
Violoncello Double Bass

68



72

E



78



84



88

F



VORSCHAUVERSION!

Violoncello

4.2 HE'S MY COMFORTER

♩ = 67

2 4

legato mf

12 **A**

20 **B**

25 **C**

29 **D**

33 **E**

37 **F**

41 **G**

48 **H**

52 **I**

57 **J**

VORSCHAUVERSION!

GmbH.

Lizenzie.

Violoncello Double Bass

6.1.2 I AM THE GOOD SHEPHERD

♩ = 74

6

legato *mf*

11 **A** 8 **B**

f

24

7

35 **D**

ff

41 **E**

p

SC:

SC:

F

f divisi *f*

56 **G** SC:

p

61

rit.